

# PlusTV HD PCI 120 Installation Manual

## Contents

V1.0

|  |             |
|--|-------------|
| Chapter 1: PlusTV HD PCI 120 Hardware Installation .....                     | 2           |
| 1.1 Package Contents .....   | 2           |
| 1.2 System Requirements.....   | 2           |
| 1.3 Hardware Installation .....  | 2           |
| Chapter 2: PlusTV HD PCI 120 Quick Installation .....                        | 3           |
| 2.1 The Driver Installation of PlusTV HD PCI 120.....                        | 4           |
| 2.2 TotalMedia Application Installation.....                                 | 4           |
| 2.3 The Remote Installation of PlusTV HD PCI 120.....                        | 6           |
| Chapter 3 : PlusTV HD PCI 120 Quick Uninstallation .....                     | 7           |
| 3.1 The Driver Uninstallation of PlusTV HD PCI 120 .....                     | 7           |
| 3.2 TotalMedia Application Uninstallation .....                              | 7           |
| 3.3 The Remote Uninstallation of PlusTV HD PCI 120 .....                     | 8           |
| Chapter 4 : FAQ .....  | 10          |
| 4.1 How to check if the driver has been installed successfully or not? ..... | 10          |
| 4.2 How to check if the Remote Control can work fine?.....                   | 10          |
| 4.3 How to uninstall all of device driver and software utility?.....         | 10          |
| Chapter 5: Remote Control .....  | 錯誤! 尚未定義書籤。 |

# Chapter 1: PlusTV HD PCI 120 Hardware Installation

## 1.1 Package Contents

Unpack your PlusTV HD PCI 120 package and make sure that all items are included. The following items should be included in your package:

- PlusTV HD PCI 120 TV Card
- Quick Start Guide
- Installation CD
- Remote control & remote sensor
- FM Antenna
- Multi-cable for AV/S-Video Input

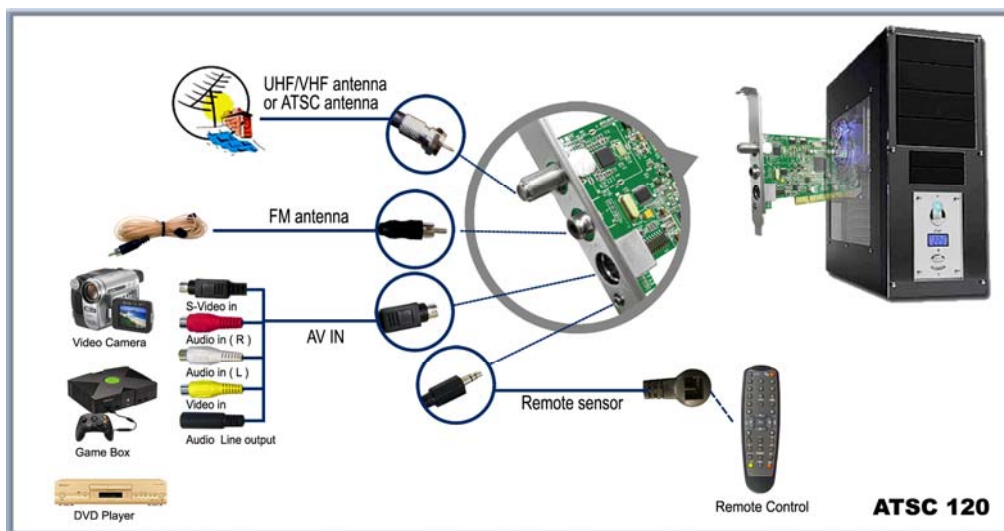
## 1.2 System Requirements

- Pentium-IV 2.4GHz or above (3.0GHz above recommended for HDTV programs)
- 256MB RAM of system memory or above (512MB recommended)
- Graphics card (Must support Microsoft DirectX 9.0 or above, high-end Graphics Card with DX-VA feature recommended for HDTV programs)
- Sound card (AC97 Compatible Sound Card)
- PCI 2.2 Compliant Slot
- 1GB free HD space
- CD-ROM drive (For software installation)
- Outdoor antenna for better ATSC and analog TV reception
- Windows® XP(SP2) / Windows XP MCE 2005 / Windows Vista

## 1.3 Hardware Installation

Follow the steps shown below for installation of your TV card and use the pictorial guide below for peripheral connections.

1. Turn off your computer.
2. Select a PCI slot and remove the slot cover, screw, etc.
3. Place PlusTV HD PCI 120 card firmly into the slot and secure the card.
4. Close the computer's case and turn on the power.

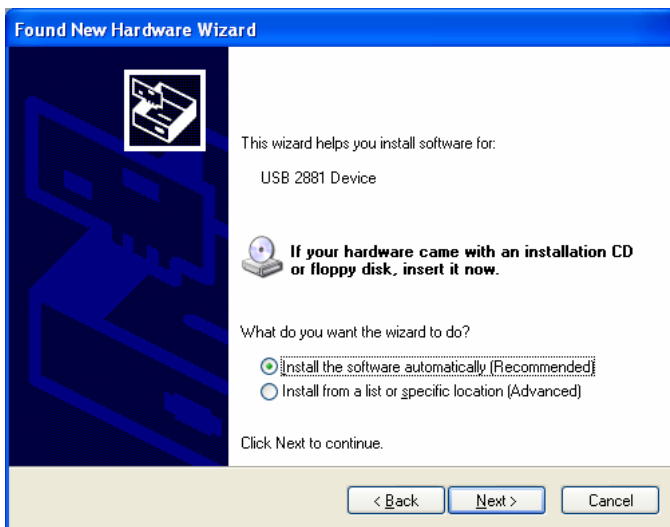


## Chapter 2: PlusTV HD PCI 120 Quick Installation

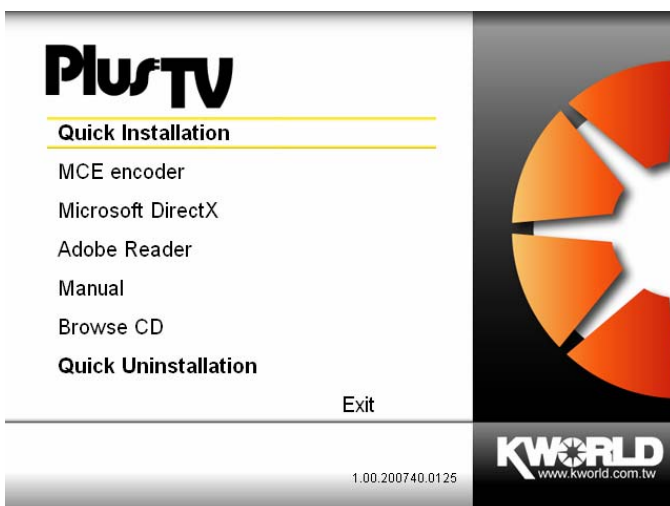
The PlusTV HD PCI 120 card package comes with complete Windows software utilities. These utilities can be found on the installation CD included in the package. Before installation, we recommend that you exit all background programs. These include applications such as anti-virus software and system monitoring applications.



1. Once you finish the hardware installation, restart your system. A window labeled: “*Found New Hardware Wizard*” will connect to Windows Update to search software. Choose “**No, not this time**” and click “*Next*” to run the utilities setup included in the CD.



2. Click “**Cancel**”, we must install from CD to have completed set up.

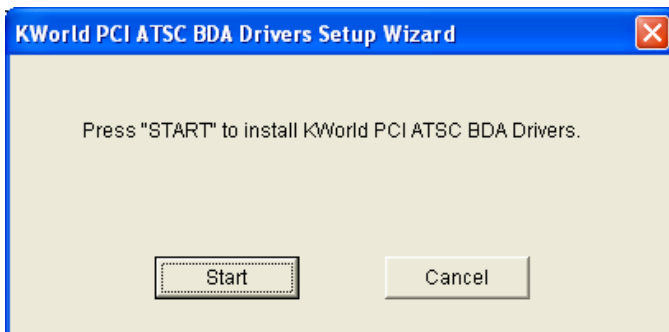


3. Insert the installation CD into the CD ROM device. The autorun page will appear as the left image. Please choose “**Quick Installation**”.



4. The Quick Installation provides you with two choices to install. If you want to install device driver and software utility completely, please choose “**Typical Installation**”. or if you want to install them partially, please choose “**Custom Installation**”. Finally click “**Install**” to continue.

## 2.1 The Driver Installation of PlusTV HD PCI 120

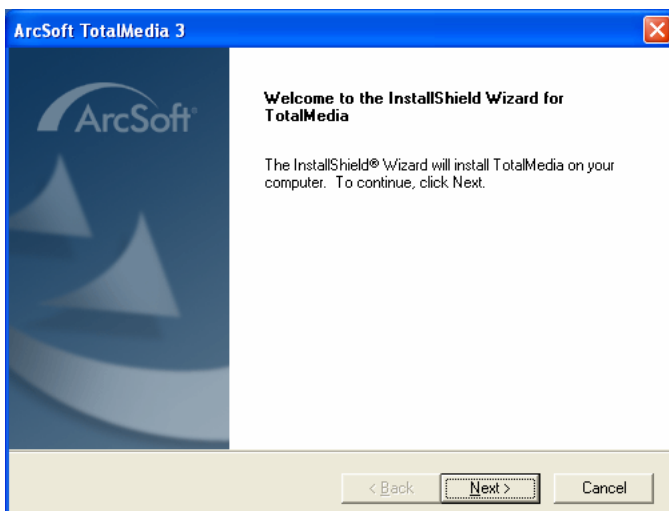


5. Click “**Start**” to install the PlusTV HD PCI 120 BDA driver. Please wait, while the installation is in process.

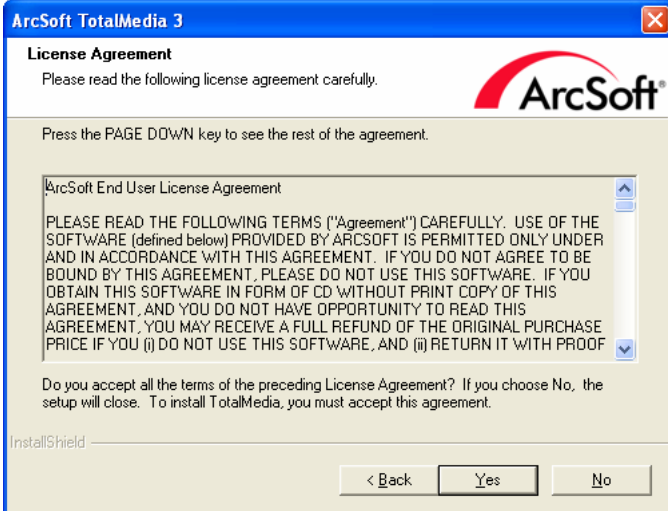


6. Now the driver has been installed successfully on your computer and click “**OK**” to finish driver installation and go to next step.

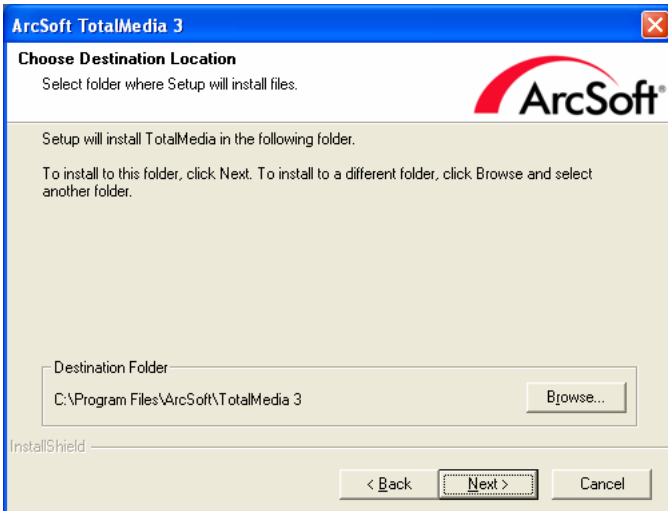
## 2.2 TotalMedia Application Installation



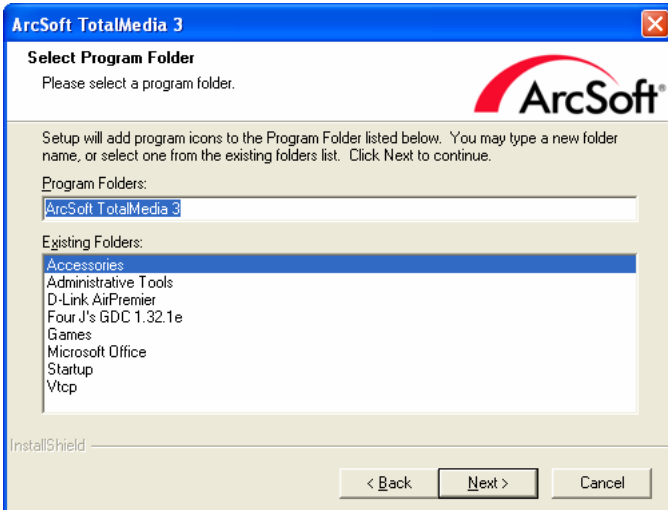
7. The InstallShield Wizard will guide you through installation of **TotalMedia** application. Click “**Next**” to continue.



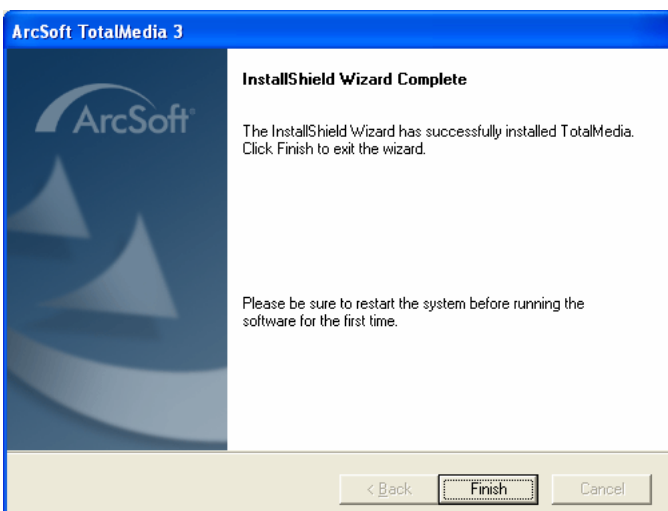
8. Click “**Yes**” accept all the terms of the proceeding License Agreement to install **TotalMedia**.



9. Please choose the destination folder where you want to install the files. You can click “**Browse**” to change the destination folder. Finally click “**Next**” to go to next step.



10. Setup will add program icons to the Program Folder’s list. You may type a new folder name, or select one from the existing folders list. Click “**Next**” to start installing. Please wait while installation in process.

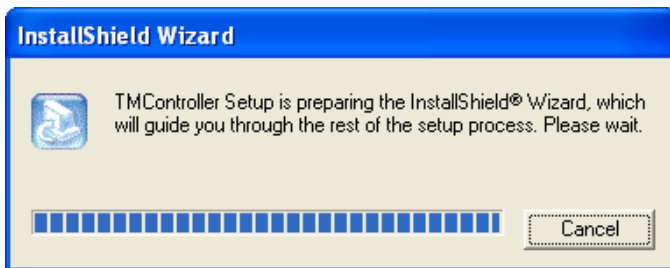


11. When the message as the one on the left image, click “**Finish**” to end the installation.

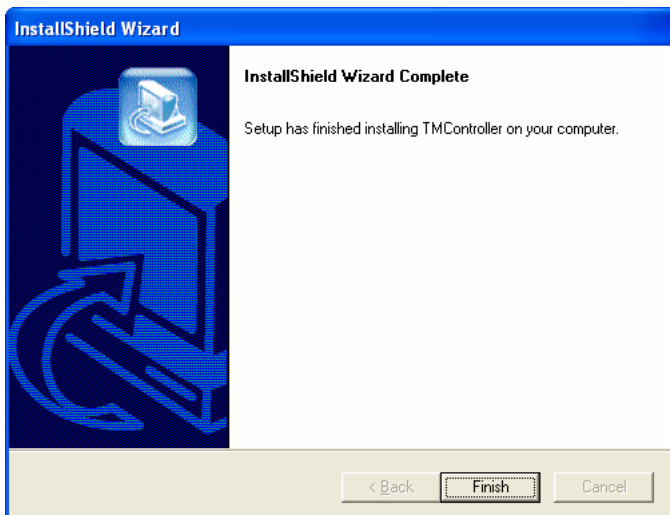
**Note:** For more detailed TotalMedia instruction, please refer to the TotalMedia HELP.

## 2.3 The Remote Installation of PlusTV HD PCI 120

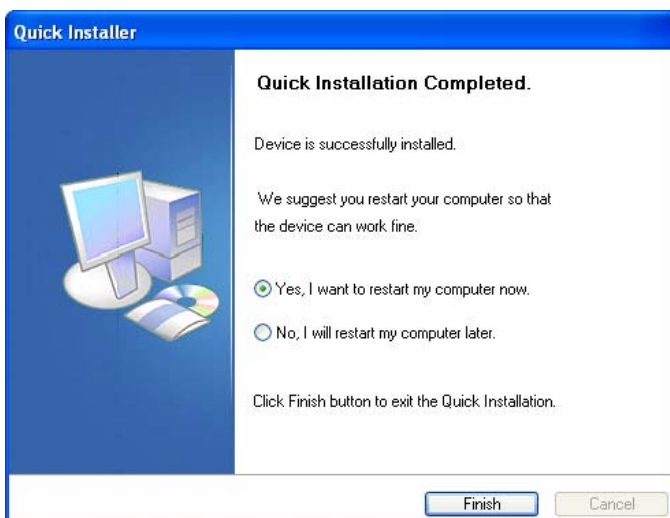
This step will instruct you to install the TMController application of PlusTV HD PCI 120. Please follow the steps below for installation.



12. The InstallShield Wizard will guide you through installation of PlusTV HD PCI 120 TMController application. Please wait.

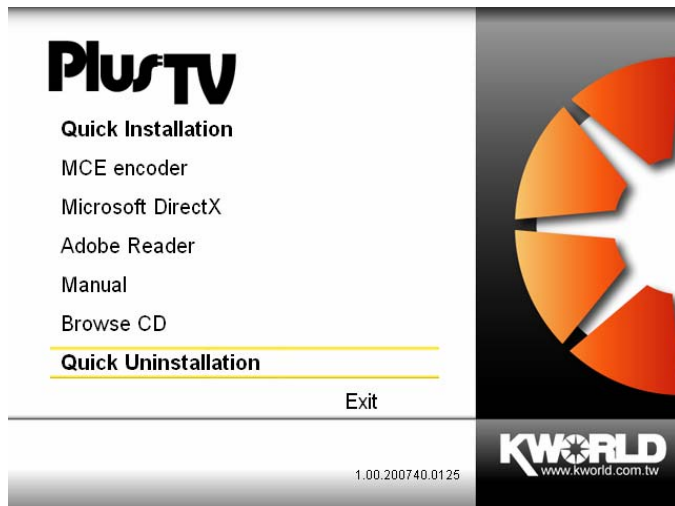


13. PlusTV HD PCI 120 utilities have been installed. Please click “*Finish*”.



14. All the drivers have been installed successfully. Please choose “*Yes, I want to restart my computer now*” to restart your computer (**Recommend**) and click “*Finish*” to end the installation.

## Chapter 3 : PlusTV HD PCI 120 Quick Uninstallation



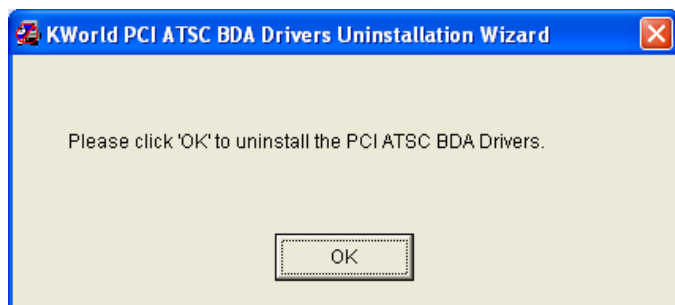
1. If you want to uninstall device driver and software utility, please click "**Quick Uninstallation**".

**Note:** You can also take another way to uninstall device driver and software utility, please refer to chapter 4 FAQ 3.

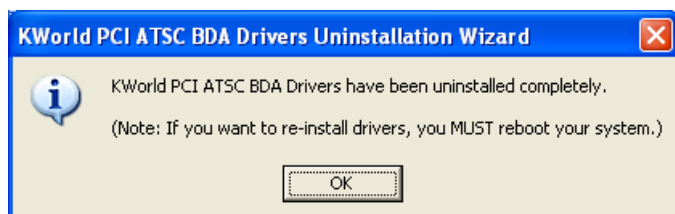


2. The Quick Uninstallation provides you with two choices to uninstall. If you want to uninstall device driver and software utility completely, please choose "**Typical Uninstallation**". Or if you want to uninstall them partially, please choose "**Custom Uninstallation**". Finally click "**Uninstall**" to continue.

### 3.1 The Driver Uninstallation of PlusTV HD PCI 120



3. Click "**OK**" to uninstall the PlusTV HD PCI 120 BDA driver. Please wait, while the uninstallation is in process.



4. Now BDA driver has been removed successfully on your operation system and click "**OK**" to go to next step.

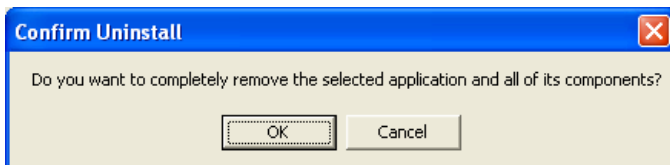
### 3.2 TotalMedia Application Uninstallation

This step will instruct you to uninstall TotalMedia Application. Please follow the steps below for uninstallation.

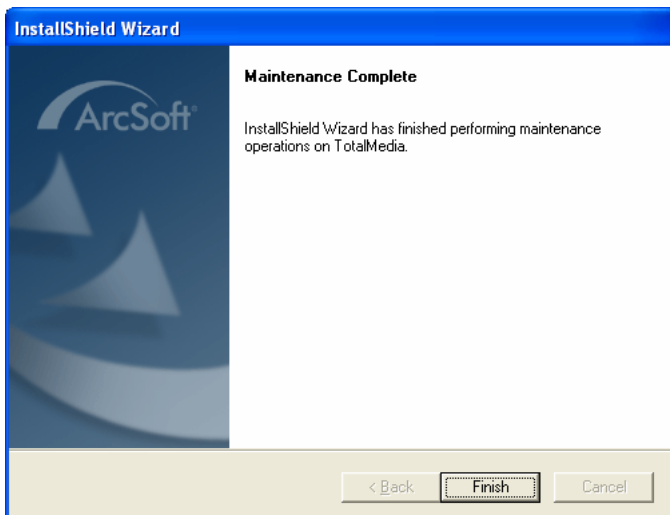




5. This step is going to remove TotalMedia application. If yes, please select “Remove” item and click “*Next*”.



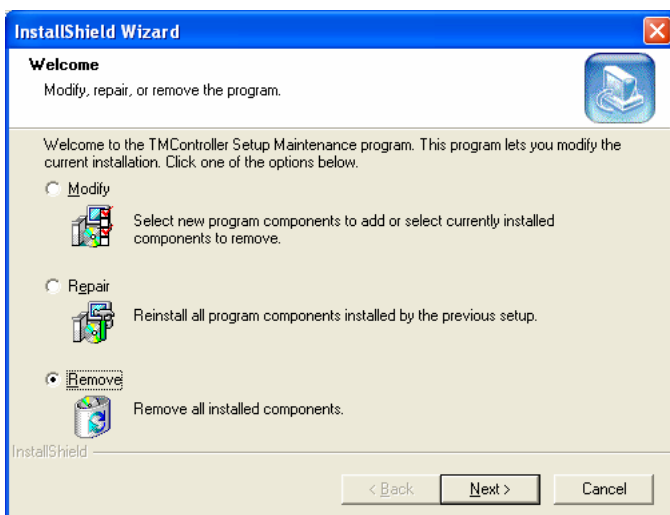
6. This step is to confirm that if you really want to remove TotalMedia application. If yes, please click “*OK*”.



7. When the windows as the one on the left image, it means the TotalMedia has been removed completely. Please click “*Finish*” to end.

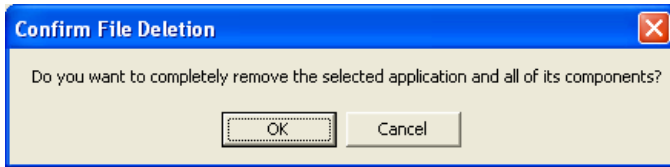
### 3.3 The Remote Uninstallation of PlusTV HD PCI 120

This step will instruct you to uninstall the TMController application of PlusTV HD PCI 120. Please follow the steps below for uninstallation.

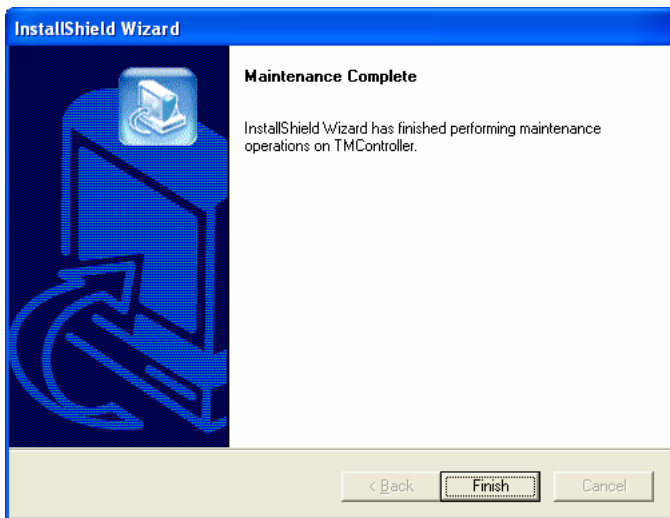


8. This step is going to remove TMController application. If yes, please select “Remove” item and click “*Next*”.

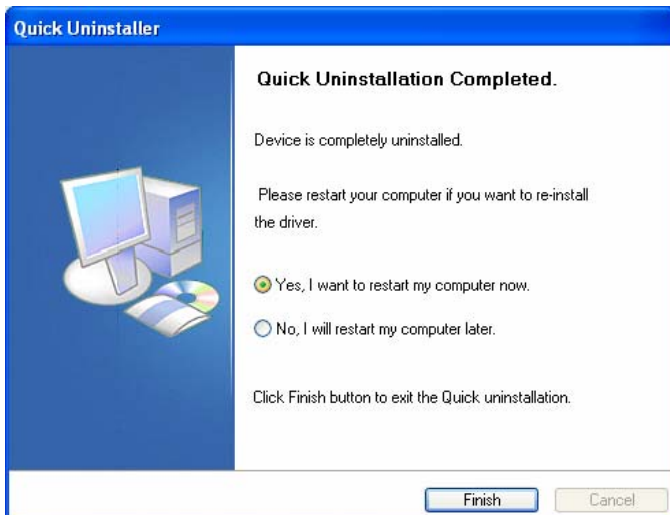




9. This step is to confirm that if you really want to remove TMController application. If yes, please click "**OK**".



10. When the windows as the one on the left image, it means the TMController application has been removed completely. Please click "**Finish**" to end.

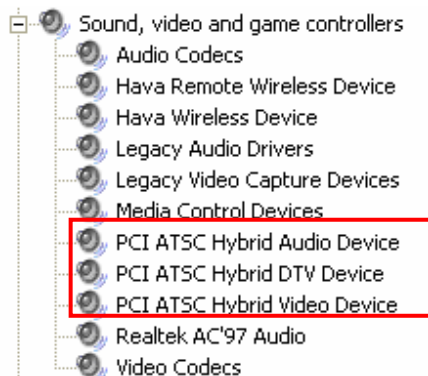


11. All the drivers have been removed completely. Please choose "**Yes, I want to restart my computer now.**" to restart your computer (**Recommend**) and click "**Finish**" to end the uninstallation.

## Chapter 4 : FAQ

### 4.1 How to check if the driver has been installed successfully or not?

**Ans :** Right click on “My Computer” on the desktop and choose “Properties”. Once in “Properties” window, click on “Device Manager” in Hardware panel. Click on the plus icon of “Sound, video and game controllers” to open the device list. See **Fig. 1** below.

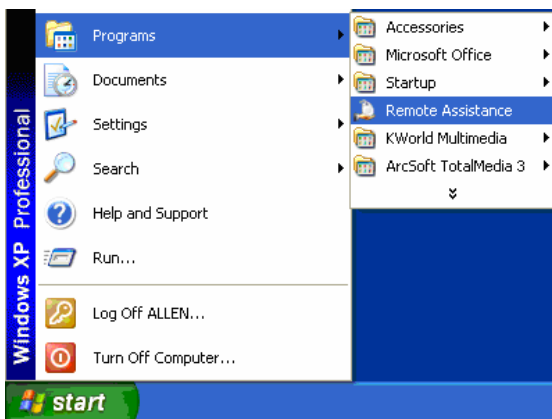


**Fig. 1**

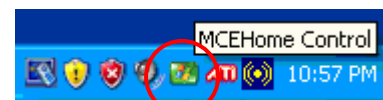
### 4.2 How to check if the Remote Control can work fine?

**Ans :** 1) You have to check if the “Remote Control” utility is installed or not. Please refer to **Fig. 2**.  
2) You have to check if the driver has been installed or not. See FAQ-2.  
3) You can check if the “Remote Control” tray icon is loaded in the right-bottom of task bar.

See **Fig.3.** below.



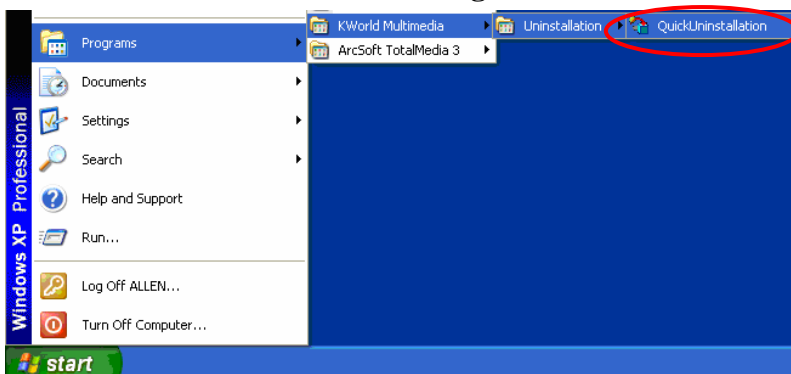
**Fig. 2**



**Fig.3**

### 4.3 How to uninstall all of device driver and software utility?

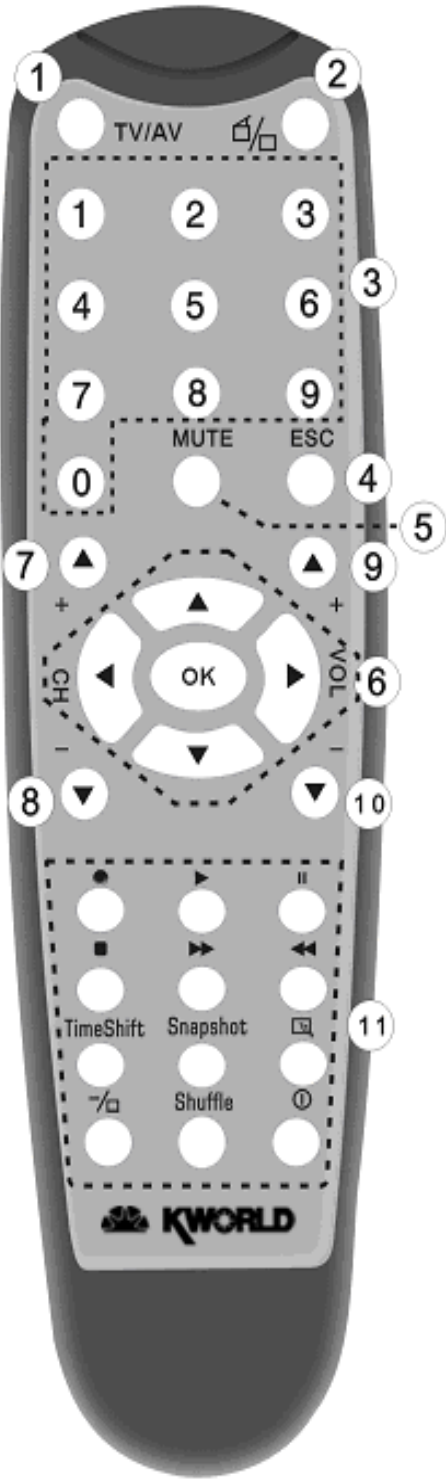
**Ans :** 1) You can put the installation CD into CD-ROM device to execute “Quick Uninstallation”.  
2) You can also follow the step (Start→All Programs→KWorld Multimedia→Uninstallation) to Uninstall. Please refer to **Fig.4**



**Fig.4**

## Chapter 5 : Remote Control

### Remote Controller Button List

|  |          |  |
|--|----------|--|
|  | 1        | <b>TV/AV:</b> Switch between S-Video, Composite, and TV  |
|  | 2        | <b>TotalMedia:</b> Open/Close TotalMedia Software  |
|  | 3        | <b>0 - 9:</b> Channel Number Keys  |
|  | 4        | <b>ESC:</b> Return   |
|  | 5        | <b>MUTE:</b> On/Off volume mute  |
|  | 6        | <b>Up</b><br><b>Down</b><br><b>Left</b><br><b>Right</b><br><b>OK</b>   |
|  | 7,8      | <b>CH+/CH-:</b> Channel Up/Channel Down  |
|  | 9、<br>10 | <b>VOL-/VOL+:</b> Volume Down/Volume Up  |
|  | 11       | <b>Record:</b> Record/Stop recording the current program<br><br><b>Play:</b> Play a recorded program<br><br><b>Pause:</b> Pause a program<br><br><b>Stop:</b> Stops pre-recorded viewing and returns to live TV<br><br><b>Forward:</b> Forward the current movie clip<br><br><b>Rewind:</b> Rewind the current movie clip<br><br><b>Time-Shift:</b> Time-Shift function<br><br><b>Snapshot:</b> Takes a picture of what is on screen<br><br><b>Show channel list:</b> Show channel list<br><br><b>Full Screen/Restore:</b> Switches from full screen to the default screen<br><br><b>Shuffle:</b> TV wall function<br><br><b>Power:</b> Turns computer off |